



STENNER PUMPS

PERISTALTIC METERING PUMPS SINCE 1957

ANIMAL HEALTH

Poultry Hatcheries & Farms, Swine Nurseries & Finishing Barns

Quality Water is Essential for Animal Health

Quality water has been proven to be a fundamental part of poultry and livestock production. Increased water consumption results in optimal growth. Clear water improves the performance of the drinking system.

Pump Performance is Vital for Quality Water

Manufactured in the USA since 1957, Stenner peristaltic metering pumps provide accurate, repeatable injection with simple operation and maintenance.

Disinfection

The entire farm's water supply can be disinfected at the well head or in the water storage tank. The use of a pump system with a water meter can provide proportional dosing if only the drinker lines need treatment.

pH Adjustment

In poultry growing facilities, accurately lowering pH levels has been proven to aid in the absorption of feed nutrients leading to improved gut health, weight gains and feed conversion rates. Properly managing drinking water pH ensures the overall health of the flock and can reduce operational costs.

Oxidation of Iron, Hydrogen Sulfide and Manganese

Oxidizers such as sodium hypochlorite or hydrogen peroxide can be injected to oxidize undesirable constituents for removal from water by filtration after adequate contact in a retention tank.

1:128 and Adjustable Ratios

Stenner has metering pumps capable of 1:128 injection. If using a house controller, one meter can be utilized with the injection pump and to register water consumption. Stenner also has pumps and pump systems with the flexibility to inject products at a specific ratio.

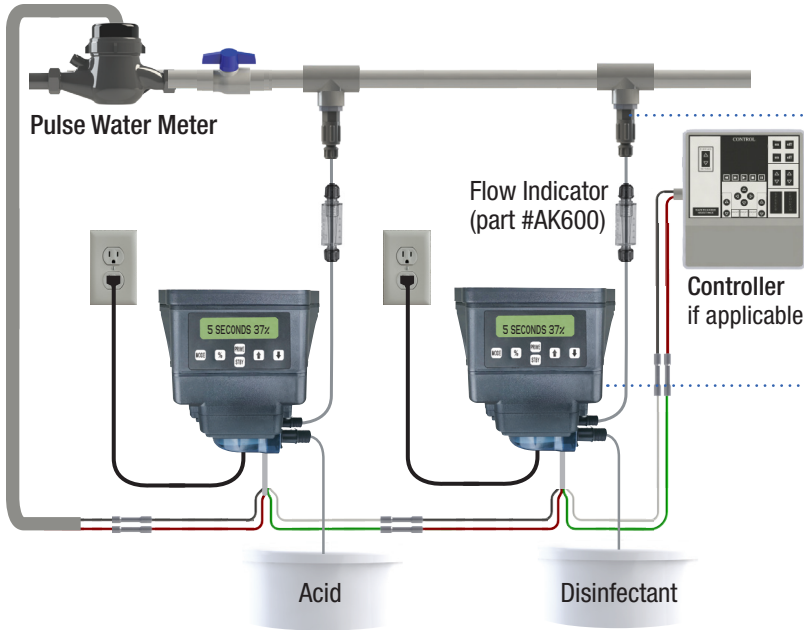
THE STENNER PUMP ADVANTAGE

- ▶ Self-priming
- ▶ No loss of prime from off-gassing solutions
- ▶ Can run dry without damage
- ▶ Solutions do not contact moving parts
- ▶ Suction lift 25'
- ▶ Simple tube replacement
- ▶ Three-point roller design helps prevent backflow, siphoning, and overdosing

WATER TREATMENT & 1:128 INJECTION PUMPS

Both activated by a dry contact water meter & equipped with a built-in repeater relay

Utilizing one water meter and the repeater relay, more than one pump can be activated to inject separate chemicals and continue to register water consumption to the house controller.



Alternative Ball Check Valve Available
Compatible with Chlorine Dioxide and Strong Acids



Ball check valve with tantalum spring and FKM seat & o-ring



Pumps shown are
Econ Integrator™ with
Econ stand (part #EC304)

WATER TREATMENT PUMPS

Digitally Adjustable for Undiluted Chemicals

1:128 INJECTION PUMPS

1 or 10 Pulse per Gallon or 1 Pulse per Liter

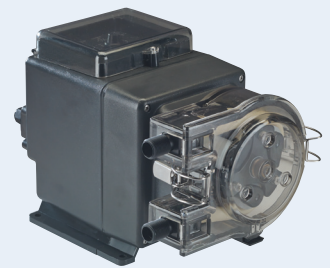


S10P

- Tube Leak Detection
- Continuous injection with 10 PPG meter for pH adjustment
- 2 year warranty

S128

- Injects into system flow to 10 GPM
- Automatically adjust speed to evenly distribute product
- Proportional injection especially at low flow rates
- Remote start & stop capability using house controller
- 2 year warranty



ECON INTEGRATOR™

Digital key pad with adjustable run times in 1% increments

ECON STENNICATOR

Adjustable dial to match water meter pulse rate

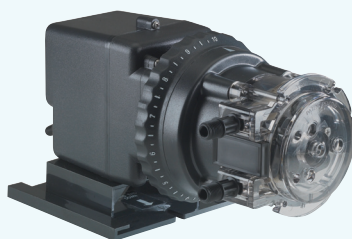
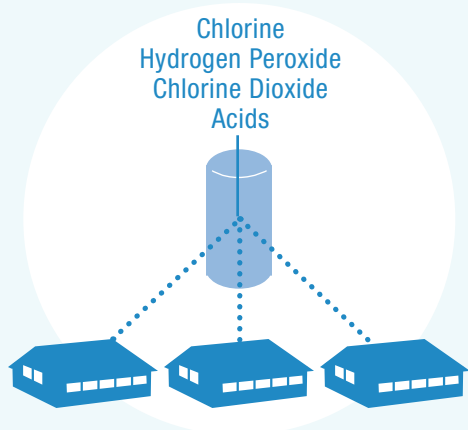


Animated Video
Econ Stennicator on a Poultry Farm



TREAT MULTIPLE LOCATIONS FROM A SINGLE WATER SOURCE

Inject at the well for disinfection and acidification. Wire pump into well pump circuit or pressure switch and manually adjust rate with external dial ring.

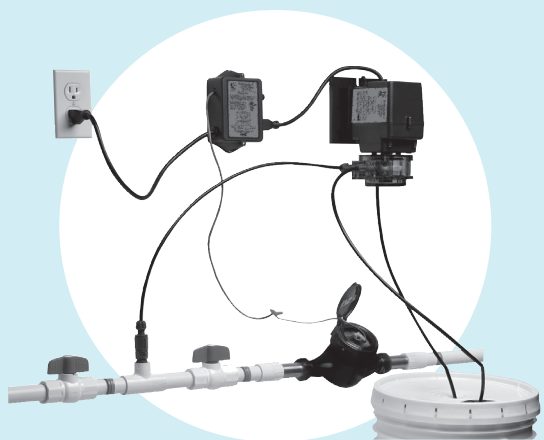


CLASSIC SERIES SINGLE HEAD ADJUSTABLE PUMP

- 6 models up to 40 gpd @100 psi
- Adjustable flow rate outputs 5% to 100%, 2.5% increments
- Snap-fit design to access components without tools

PROPORTIONAL INJECTION BASED ON WATER SYSTEM FLOW RATE

A pulsing dry contact water meter sends a signal to the PCM. The PCM actuates the fixed rate pump to proportionally inject the desired dose based on the system flow rate.

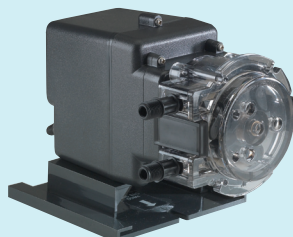


Customize installation with three components



PCM

- Time adjustable controller
- 4 models available
- 0.1 to 20.0 seconds



CLASSIC SERIES FIXED RATE PUMP

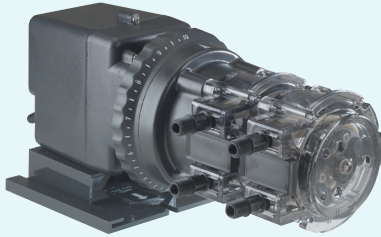
Flow rate outputs up to 100 psi
3, 5, 10, 17, 22, 40 gallons per day



WATER METER

- Reed Switch with Dry Contact Closure
- Plastic: 3/4", 1", 1 1/2"
- Stainless steel: 2"
- Vertical positive displacement: 3/4"

STENNER PUMPS FOR ANIMAL HEALTH



DRIP FEED DISINFECTANT IN HATCHERIES CLASSIC SERIES DOUBLE HEAD ADJUSTABLE PUMP

Inject fuming disinfectants into adjacent cabinets to prevent bacterial growth. Pump can be used with a timer for scheduled doses.



CHEMICAL INJECTION FOR INSTALLATIONS WITH LARGE PIPE DIAMETER

S420

- Accepts a 4-20mA signal from ultrasonic meters
- Tube leak detection
- Popular in chlorine dioxide systems for the whole farm



INJECT LIQUID ORAL VACCINES VACCINATOR

- Consistently injects over 6 hours
- Built-in timer shuts off pump automaticall
- Eliminates pre-measuring stock solutions
- Available as 1-gallon US or 5 liters Europe



IDEAL FOR MINIMAL WATER FLOW DURING EARLY STAGE POULTRY FLOCKS & SWINE NURSERIES 3/4" VPD LOW FLOW WATER METER

- Vertical positive displacement
- Two models: 1 PPG or 1 PPL
- Registers flow rates 0.1 to 22 gpm