

ELECTRONIC

CHLOR-SCALE 150™

FOR 150 lb (68 kg) Chlorine & SO2 Cylinders

SAFELY MONITOR
CHEMICAL USAGE
AND LEVEL

SOLID PVC PLATFORM
WILL NEVER CORRODE

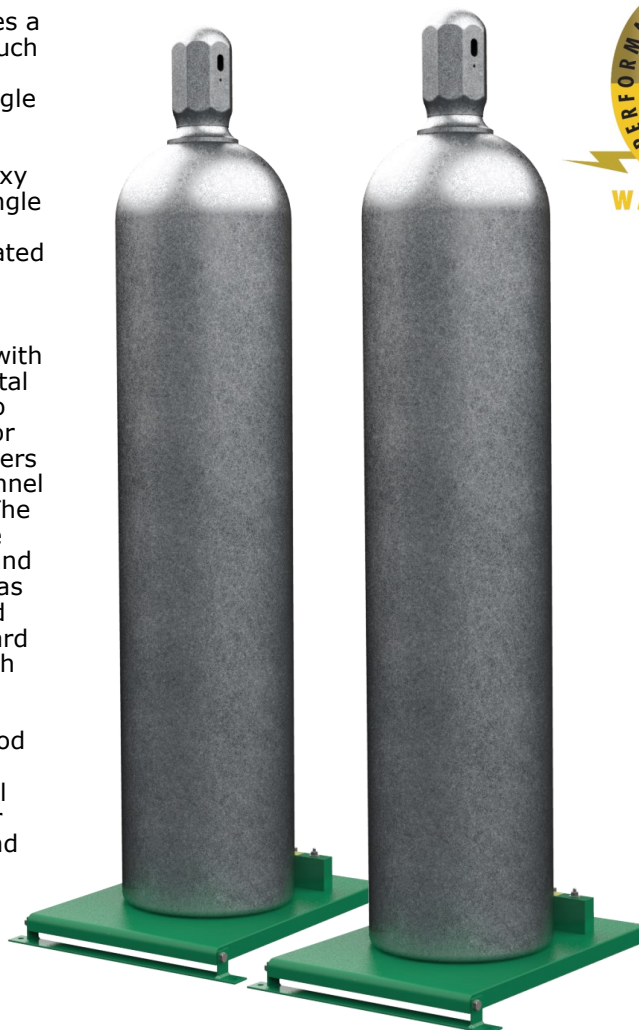
SINGLE SHEAR BEAM
LOAD CELL FOR DURABILITY

WITH SOLO G2™
OR WIZARD 4000™
DIGITAL INDICATORS

The Electronic Chlor-Scale 150™ provides a simple and accurate way to monitor how much chlorine or SO2 is being fed and how much remains in 150 lb (68 kg) cylinders. The single load cell, pivoted platform design has no moving parts and is machined from a solid piece of PVC plastic, then fitted with an epoxy powder coated stainless steel hinge. The single shear beam load cell keeps electronics to a minimum for increased reliability and is located off the floor for durability in harsh chemical feed locations.

The Electronic Chlor-Scale 150 is available with either the SOLO G2™ or Wizard 4000™ digital weight indicator. The SOLO G2 is an easy to use indicator that can independently monitor the remaining chemical in one or two cylinders and includes a 4-20mA output for each channel for remote monitoring via SCADA or PLC. The Wizard 4000 can independently monitor the remaining chemical in up to four cylinders and offers advanced chemical information such as feed rate, daily usage, days until empty and keeps a 30 day log of daily usage. The Wizard 4000 also includes a 4-20mA output for each scale.

Using a scale is the most accurate method available for monitoring chemical inventory and the proven design of the single load cell Electronic Chlor-Scale 150 insures that your monitoring ability will be available day in and day out.



NO FINGER POINTING.
NO FINE PRINT.™



WIZARD 4000™
(1 TO 4 CHANNEL)
Bulletin 400



SOLO G2™
(1 OR 2 CHANNEL)
Bulletin 516

The Electronic Chlor-Scale 150™ is a complete weighing system, including a SOLO G2™ or Wizard 4000™ Digital Weight Indicator and a cylinder chaining bracket for each platform (tools not included).



FORCE FLOW

CHECK. CONTROL. COMPLY.

SPECIFICATIONS

ELECTRONIC

CHLOR-SCALE 150™

FOR 150 lb (68 kg) Chlorine & SO2 Cylinders

MODELS & ORDERING INFORMATION

Electronic Chlor-Scale 150™ with SOLO G2™

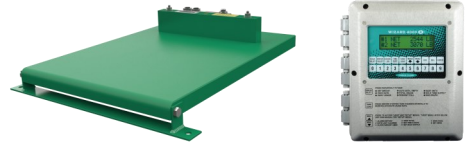
Models below include platform(s) with electronic load cell with 10 feet of cable, cylinder chaining bracket, and SOLO G2 digital weight indicator with 4-20mA output signal. For more information on the SOLO G2, see Bulletin 516.



MODEL (METRIC)	# OF PLATFORMS (CYLINDERS)	CYLINDER SIZE	PLATFORM CAPACITY	DISPLAY INCREMENTS	SHIPPING WEIGHT
GR150-1	1	USA Style 150	400 lb	0.2 lb	28 lb
GR150-2	2	USA Style 150	400 lb	0.2 lb	47 lb
GR100K-1	1	8-13 1/2" (203-343 mm) Diameter	200 kg	0.1 kg	13 kg
GR100K-2	2	8-13 1/2" (203-343 mm) Diameter	200 kg	0.1 kg	22 kg

Electronic Chlor-Scale 150™ with Wizard 4000™

Models below include platform(s) with electronic load cell with 10 feet of cable, cylinder chaining bracket, and Wizard 4000 digital weight indicator with 4-20mA output signal. For more information on the Wizard 4000, see Bulletin 400.



MODEL (METRIC)	# OF PLATFORMS (CYLINDERS)	CYLINDER SIZE	PLATFORM CAPACITY	DISPLAY INCREMENTS	SHIPPING WEIGHT
WR150-1	1	USA Style 150	400 lb	0.2 lb	29 lb
WR150-2	2	USA Style 150	400 lb	0.2 lb	47 lb
WR150-3	3	USA Style 150	400 lb	0.2 lb	65 lb
WR150-4	4	USA Style 150	400 lb	0.2 lb	85 lb
WR100K-1	1	8-13 1/2" (203-343 mm) Diameter	200 kg	0.1kg	13 kg
WR100K-2	2	8-13 1/2" (203-343 mm) Diameter	200 kg	0.1kg	22 kg
WR100K-3	3	8-13 1/2" (203-343 mm) Diameter	200 kg	0.1kg	30 kg
WR100K-4	4	8-13 1/2" (203-343 mm) Diameter	200 kg	0.1kg	39 kg

INDICATOR OPTIONS

SOLO G2 Part No.	WIZARD 4000 Part No.	DESCRIPTION
G5ASP	W5ASP	Relay for Level Alarm (up to 4 per indicator)
DR-CABLE	DR-CABLE	Additional load cell cable (per foot)
GRS485	WRS485	MODBUS ASCII RS485 Serial Communication

OTHER MODELS & ACCESORIES

Hi-Accuracy

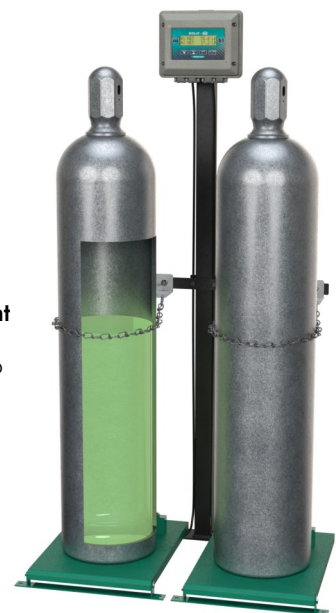
Electronic Chlor-Scale 150™

for very low feed rates or for monitoring smaller cylinders. See Bulletin 409.



Optional Pedestal Mount

for systems that cannot be installed adjacent to a wall. Model DS60



WWW.FORCEFLOWSCALES.COM

DRAWINGS • ENGINEERED SPECS • LITERATURE

2430 Stanwell Drive, Concord, CA 94520 USA | Tel: 925-686-6700
info@forceflow.com | www.forceflowscales.com



CHECK. CONTROL. COMPLY.