

**ELECTRONIC**  
**CHEM-SCALE™**  
**FOR CHEMICAL DAY TANKS**

<p><b>SAFELY MONITOR</b> CHEMICAL USAGE AND LEVEL</p>	<p><b>WARN OF DANGEROUS</b> OVER AND UNDER FEED CONDITIONS</p>	<p><b>LEVEL ALARMS PREVENT</b> TANK FROM ACCIDENTALLY RUNNING EMPTY</p>	<p><b>REMOTE MONITORING</b> REDUCES OPERATOR EXPOSURE TO CHEMICALS</p>
---	--	---	--

The Electronic Chem-Scale™ provides a simple and accurate way to monitor how much chemical is being fed and how much remains in chemical day tanks. The standard pivoted platform design of the Chem-Scale has no moving parts and uses a single shear beam load cell to accurately measure the current weight of the chemical. The heavy duty steel scale platform is coated with our Tuf-Coat™ 80 mil thick poly-urea finish to provide extended corrosion protection in harsh chemical room environments. Adjustable tank restraint clips are included with the Chem-Scale to help keep your tank securely located on the platform.

The Electronic Chem-Scale is available in many different sizes and capacities allowing you to closely match the scale to your specific tank requirements.

Using a scale is the most accurate method available for monitoring chemical inventory and the proven design of the Electronic Chem-Scale insures that your monitoring ability will be available day in and day out.



Standard Pivoted Single Load Cell Model



High Accuracy 4-Load Cell Model



**WIZARD 4000**  
(1 TO 4 CHANNEL)  
Bulletin 400



**SOLO G2**  
(1 OR 2 CHANNEL)  
Bulletin 516



**HYPO TRAK**  
For sodium hypo-chlorite. Bulletin 516

The Electronic Chem-Scale can be ordered with the Wizard 4000, SOLO G2 or HYPO TRAK Digital Weight Indicator for a complete monitoring system.



**MODELS & ORDERING INFORMATION**

**Electronic Chem-Scale™ — Single Load Cell Models (1/4 of 1% full scale accuracy)**

Chem-Scale models below include Tuf-Coat™ steel platform with (4) tank restraint clips and electronic load cell with 20 feet of cable. Longer cable length available upon request. Digital weight indicator sold separately - see information on SOLO G2, Wizard 4000 and Hypo Trak indicators. **Consult factory for custom sizes and capacities.**

Complete model numbers below by filling in capacity using the following:

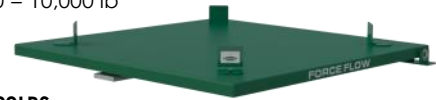
**FOR LB:** 5 = 500 lb, 10 = 1000 lb, 20 = 2000 lb, 30 = 3000 lb, 40 = 4000 lb, 50 = 5000 lb, 100 = 10,000 lb

EXAMPLE 40-DR30LP = 40" platform with 3000 lb capacity

**FOR KG:** 5K = 500 kg, 1K = 1000 kg, 15K = 1500 kg, 20K = 2000 kg, 25K = 2500 kg

EXAMPLE 50-DR25KLP = 50" platform with 2500 kg capacity

For 316 Stainless Steel, add an "S" to model number after the "P". For example 30-DR20LPS



MODEL	PLATFORM SIZE - inches (mm)	CAPACITY	TANK DIAMETERS	SHIPPING WT.
27-DR__LP	27 1/2 x 27 1/2 x 2 (699 x 699 x 51)	Up to 1000 lb (500kg)	22" to 27 1/2" (559 - 699mm)	70 lb (32 kg)
30-DR__LP	30 x 30 x 3 1/4 (762 x 762 x 83)	Up to 5000 lb (2500 kg)	20" to 30" (508 - 762mm)	135 lb (62 kg)
36-DR__LP	36 x 36 x 3 1/4 (914 x 914 x 83)	Up to 5000 lb (2500 kg)	26" to 36" (660 - 914mm)	165 lb (75 kg)
40-DR__LP	40 x 40 x 3 1/4 (1016 x 1016 x 83)	Up to 5000 lb (2500 kg)	30" to 40" (762 - 1016mm)	225 lb (103 kg)
50-DR__LP	50 1/2 x 50 1/2 x 3 1/4 (1283 x 1283 x 83)	Up to 5000 lb (2500 kg)	40" to 50" (1016 - 1270mm)	305 lb (139 kg)
54-DR__LP	54 x 54 x 3 1/4 (1372 x 1372 x 83)	Up to 5000 lb (2500 kg)	44" to 54" (1118 - 1372mm)	317 lb (144 kg)
60-DR__LP	60 x 60 x 3 1/4 (1524 x 1524 x 83)	Up to 10,000 lb (5000 kg)	50" to 60" (1270 - 1524mm)	475 lb (216 kg)

**Electronic High Accuracy Chem-Scale — Four (4) Load Cell Models (1/10 of 1% full scale accuracy)**

Chem-Scale models below include Tuf-Coat™ steel platform, electronic summing box and (4) electronic load cells each with 20 feet of cable. Longer cable lengths available upon request. Digital weight indicator not included - see information on SOLO G2, Wizard 4000 and Hypo Trak indicators. Tank restraint clips optional. **Consult factory for custom sizes and capacities.**

Complete model numbers below by filling in capacity using the following:

**FOR LB:** 5 = 500, lb 10 = 1000 lb, 20 = 2000 lb, 30= 3000 lb, 40 = 4000 lb, 50 = 5000 lb.

EXAMPLE 40-DR30LP = 40" platform with 3000 lb capacity

**FOR KG:** 5K = 500 kg, 1K = 1000 kg, 15K—1500 kg, 20K = 2000 kg, 25K = 2500 kg

EXAMPLE 40-DR25KLP = 40" platform with 2500 kg capacity

For 316 Stainless Steel, add an "S" to model number after the "P". For example 30-DR20LPSHA4.



MODEL	PLATFORM SIZE	CAPACITY	TANK DIAMETERS	SHIPPING WT.
27-DR__LPHA4	27 1/2 x 27 1/2 x 2 (699 x 699 x 51)	Up to 1000 lb (500kg)	Up to 27.5" (51mm)	70 lb (32 kg)
30-DR__LPHA4	30 x 30 x 3 1/4 (762 x 762 x 83)	Up to 5000 lb (2500 kg)	Up to 30" (762mm)	135 lb (62 kg)
36-DR__LPHA4	36 x 36 x 3 1/4 (914 x 914 x 83)	Up to 5000 lb (2500 kg)	Up to 36" (914mm)	165 lb (75 kg)
40-DR__LPHA4	40 x 40 x 3 1/4 (1016 x 1016 x 83)	Up to 5000 lb (2500 kg)	Up to 40" (1016mm)	225 lb (103 kg)
50-DR__LPHA4	50 1/2 x 50 1/2 x 3 1/4 (1283 x 1283 x 83)	Up to 5000 lb (2500 kg)	Up to 50.5" (1283mm)	305 lb (139 kg)
54-DR__LPHA4	54 x 54 x 3 1/4 (1372 x 1372 x 83)	Up to 5000 lb (2500 kg)	Up to 54" (1372mm)	317 lb (144 kg)
60-DR__LPHA4	60 x 60 x 3 1/4 (1524 x 1524 x 83)	Up to 10,000 lb (5000 kg)	Up to 60" (1524mm)	475 lb (216 kg)

**Electronic Chem-Scale — High Capacity Models for Large Tanks**

Consult factory for available capacities and load cell configurations.

MODEL	PLATFORM SIZE inches (mm)	CAPACITY	SHIPPING WT.
72-DR100LP	72 x 72 x 3 1/2 (1829 x 1829 x 89)	Up to 10,000 lb (5000 kg)	Consult Factory
72-DR__LPHA4	72 x 72 x 6 (1829 x 1829 x 152)	Up to 20,000 lb (10,000 kg)	Consult Factory
84-DR__LPHA4	84 x 84 x 12 (2134 x 2134 x 305)	Up to 40,000 lb (20,000 kg)	Consult Factory
96-DR__LPHA4	96 x 96 x 16 1/2 ( 2438 x 2438 x 419)	Up to 40,000 lb (20,000 kg)	Consult Factory

