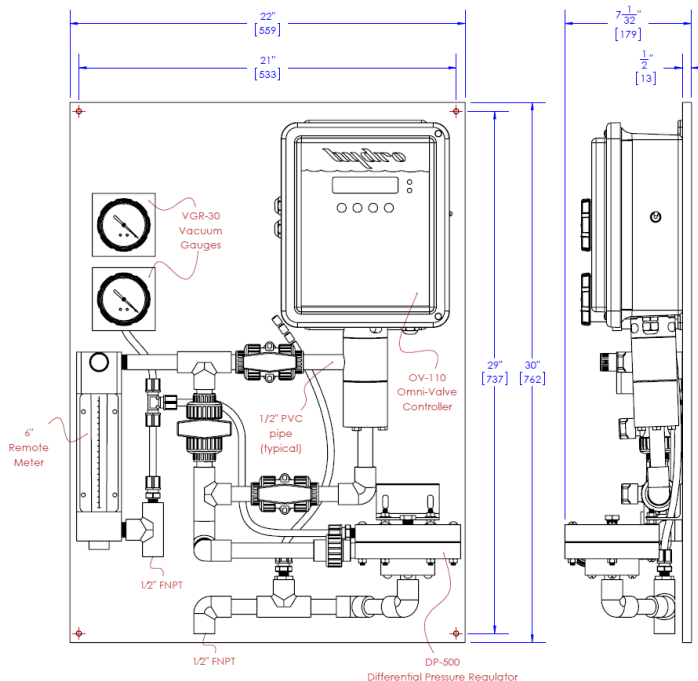


## Wall Mounted Panels

Wall panel solutions offer the ability to panel mount equipment such as the Omni-Valve line of automatic control valves and other accessories.

- Wall panel mounting simplifies the installation process and keeps the mounted equipment easy to access for operation and maintenance. Panels mount flush to the wall
- Schedule 80 PVC bypass piping and valve arrangements make it easy to rout flow around equipment so that it can be removed for service without interrupting chemical feed.
- Panel mounting minimizes the equipment footprint, conserving space and eliminates bulky & expensive cabinets.
- Panels are constructed using the highest quality high density polyethylene (HDPE) plastic.
- Panel sizing has been standardized for the most common configurations. Custom sizes are also available.



## Wall Panel Benefits & Features:

- Reduced cost compared to cabinets
- Compact all-in-one automated feed control
- Convenient and easy access to equipment
- Gas or liquid feed with a wide range of capacities
- Custom arrangements available. Wall panels can be made-to-order to fit application specific requirements.
- Optional vacuum Instrumentation:
  - Vacuum gauges
  - Vacuum switches
  - Electronic vacuum monitors
- Optional differential pressure regulation
- Optional gas flowmeter with 4-20mA output for higher capacities.