

# ECON FP PUMP & METER SYSTEM



Up to 30 gpd @ 80 psi  
10:1 Turndown

Wall Mountable

LCD Cover for Wet Environments



## THREE FUNCTIONS ALL-IN-ONE PUMP

The Econ FP is a flow activated, compact and easy to program pump offering three modes of operation. The pump can accept a dry contact signal or a 12-24 VAC/VDC signal from control equipment that responds to flow.

The pump can be adjusted from 10% to 100% in 1% increments. In the seconds mode, the operating time is adjustable. When utilizing the flow switch or auxiliary mode, the speed is adjustable.

## Effortless Tube Replacement



## COMPACT & CONVENIENT METER SYSTEM

Save time on installations with the Econ FP Meter System with the pump and plastic, lead-free water meter pre-mounted on a heavy duty panel.

A flow indicator is included to confirm the solution is pumping and the junction box keeps the wires neatly contained.



- ..... Econ FP Pump
- ..... Flow Indicator
- ..... Junction Box
- ..... Water Meter

**Ideal for light duty water conditioning applications**

- Patented quick release pump head design
- Solid one piece tube construction
- cULus for indoor/outdoor use
- NSF 61 & 372
- CE available
- Pump: 4 lbs, 5.4 x 3.7 x 5.9 in.
- Meter System: 17 lbs, 19 x 18 x 7 in.

Accessories sold separately

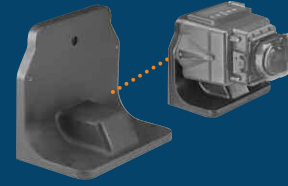
**Mounting Kit EC303**

Attach pump to a Stenner tank or wall



**Stand EC304**

Mount pump to a wall or display on a flat surface  
Vertical mount required for wet environments.



**Flow Switch**  
For Copper or PVC

Contact factory for part numbers.



**Flow Rate Outputs**

Item Number Prefix	Pump Tube	Roller Assembly	Gallons per Day	Pressure psi	Liters per Day	Pressure bar
<b>E10PLM</b>	M	White	0.49	80	1.84	5.5
<b>E1OPHM</b>	M	White	0.83	80	3.14	5.5
<b>E2OPHM</b>	M	White	1.41	80	5.36	5.5
<b>E2OPHF</b>	F	White	4.5	80	17.01	5.5
<b>E2OPHG</b>	G	Black	16.0	80	60.48	5.5
<b>E2OPHH</b>	H	Black	30.0	80	113.40	5.5

Approximate Maximum Outputs @ 50/60Hz

**Build An Item Number for the Pump, Meter System or Tank System**



Select **Item Number Prefix** from output chart above

Omit if not ordering a Tank System

- Tank**
- S7G** 7.5-Gallon UV Gray
  - S7N** 7.5-Gallon White
  - S1G** 15-Gallon UV Gray
  - S1N** 15-Gallon White
  - S3G** 30-Gallon UV Gray
  - S3N** 30-Gallon White
- NOTE: Tanks also sold separately.

- Voltage & Hertz/Cord**
- 7** 120V 60Hz; 6' cord
  - 8** 120V 60Hz; 10' cord
  - B** 230V 60Hz; 6' cord
  - 5** 24VDC; 1' cord
  - 9** 240V 50Hz; 6' cord  
*INTERNATIONAL*

- Suction & Discharge Tubing**
- 1** 1/4" White
  - 2** 1/4" UV Black
  - 5** 6 mm White  
*Europe*

**Tube Material**  
**S** Santoprene®  
NOTE: Refer to chemical resistance guide for chemical compatibility.

Omit if not ordering a Meter System

- Includes **PLASTIC WATER METER** certified by IAPMO to ANSI/NSF 372
- Meter System Panel**
- 71** 3/4", 1 pulse/gallon
  - 72** 3/4", 2 pulses/gallon
  - 74** 3/4", 4 pulses/gallon
  - 11** 1", 1 pulse/gallon
  - 12** 1", 2 pulses/gallon
  - 14** 1", 4 pulses/gallon

**Tank System and Meter System are two separate systems and are not sold as one.**