

ECON INTEGRATOR™

Water Meter activated chemical injection pump for livestock farms

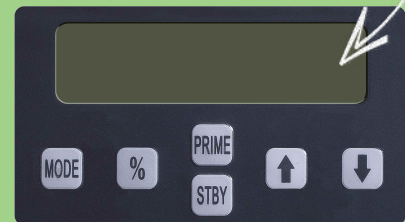
The Integrator is for use on farms using a pulsing water meter to register water consumption. The pump injects by way of the pulse from a water meter and its dosage is adjustable by use of a digital control panel.

The internal relay repeats the signal from the water meter through the pump to the house controller. When the pump has power, the water meter signal will register to the house controller in both operation and standby mode. The pump can be easily serviced in standby mode.

Ideal for injecting disinfectants and for adjusting pH.

Advantages over traditional water driven pumps/medicators

- **Injecting undiluted chemical** means no stock solutions to maintain on a daily basis – set it and forget it and save on labor costs.
- **Injects directly into water line**, eliminating water flow restriction
- **Pumps are not harmed** by scale, solids, strong acids and disinfectants.
- **Easily serviced with effortless tube replacement** using the patented quick release pump head.



Control Panel

The pump operating times are digitally adjusted from 0.1 to 60 seconds in 1% increments.

Ideal for Livestock Water Treatment

- Self-priming; does not lose prime
- Solution is not in contact with moving parts
- cULus for indoor/outdoor use
- Brushless motor
- Pump: 4 lbs; 5.4 x 3.7 x 5.9 in.
- Meter System: 17 lbs; 24 x 12 x 23 in.

Accessories sold separately

Mounting Kit EC303

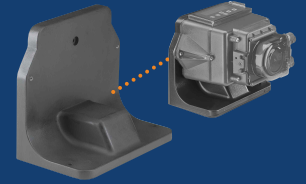
Attach pump to a Stenner tank or wall



Stand EC304

Mount pump to a wall or display on a flat surface

Vertical mount required for wet environments.

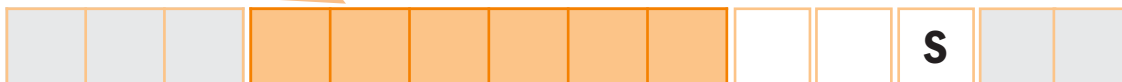


Flow Rate Outputs

Item Number Prefix	Pump Tube	Roller Assembly	Turndown Ratio	Gallons per day	Gallons per hr	Ounces per hr	Ounces per min	Pressure psi	Liters per Day	Liters per hr	Milliliters per hr	Milliliters per min	Pressure bar
E10RLM	M	White	10:1	0.49	0.02	2.6	0.04	80	1.84	0.08	76.7	1.3	5.5
E10RHM	M	White	10:1	0.83	0.03	4.4	0.07	80	3.14	0.13	130.8	2.2	5.5
E20RHM	M	White	10:1	1.41	0.06	7.5	0.13	80	5.36	0.22	223.2	3.7	5.5
E20RHF	F	White	10:1	4.5	0.19	24.0	0.40	80	17.01	0.71	708.8	11.8	5.5
E20RHG	G	Black	10:1	16.0	0.67	85.3	1.42	80	60.48	2.52	2520.0	42.0	5.5
E20RHH	H	Black	10:1	30.0	1.25	160.0	2.67	80	113.40	4.72	4725.0	78.8	5.5

Approximate Maximum Outputs @ 50/60Hz

Build An Item Number for the Pump, Meter System or Tank System



Omit if not ordering a Tank System

Tank

- S7G** 7.5-Gallon UV Gray
- S7N** 7.5-Gallon White
- S1G** 15-Gallon UV Gray
- S1N** 15-Gallon White
- S3G** 30-Gallon UV Gray
- S3N** 30-Gallon White

NOTE: Tanks also sold separately.

Voltage & Hertz/Cord

- 7** 120V 60Hz; 6' cord
- 8** 120V 60Hz; 10' cord
- B** 230V 60Hz; 6' cord
- 5** 24VDC; 1' cord

Suction & Discharge Tubing

- 1** 1/4" White
- 2** 1/4" UV Black

Tube Material

S Santoprene®
NOTE: Refer to chemical resistance guide for chemical compatibility.

Omit if not ordering a Meter System

Includes **PLASTIC WATER METER** certified by IAPMO to ANSI/NSF 372

Meter System Panel

- 71** 3/4", 1 pulse/gallon
- 72** 3/4", 2 pulses/gallon
- 74** 3/4", 4 pulses/gallon
- 11** 1", 1 pulse/gallon
- 12** 1", 2 pulses/gallon
- 14** 1", 4 pulses/gallon

Tank System and Meter System are two separate systems and are not sold as one.