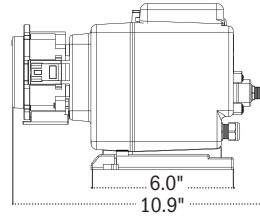
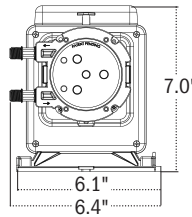
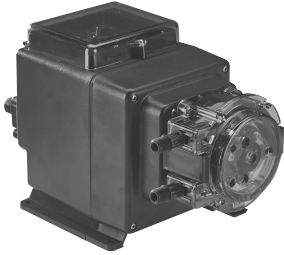


S VARIABLE SERIES SPECIFICATIONS

STENNER PUMPS®

S3V Models

Shipping Weight
9 lbs (3.7 kg)

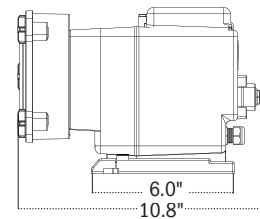
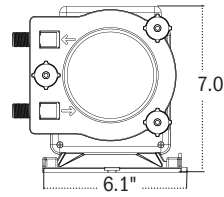
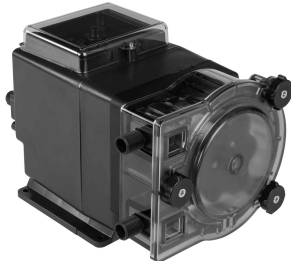


AGENCY LISTINGS



S4V Models

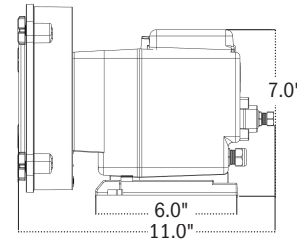
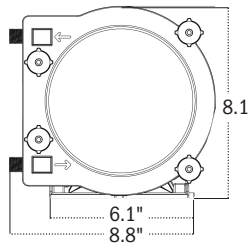
Shipping Weight
9 lbs (3.7 kg)



Intertek
94247
CONFORMS TO
ANSI/NSF STD. 50
Equipment for swimming pools,
spas, hot tubs and other
recreational water facilities.

S5V Models

Shipping Weight
14 lbs (6.3 kg)



Listings vary by model

FEATURES

- Manually adjustable flow rate output
- Leak detection with dedicated output relay
- Backup pump capability
- Standby input option to stop or start pump remotely
- Dedicated output relay for run verification
- LED indicator lights
- Totally enclosed housing, NEMA 4X
- 2 year warranty
- Self-priming, does not lose prime or vapor lock
- Pumps off-gassing solutions and can run dry
- 3-point roller design assists with anti-siphon
- Simple tube replacement
- Output reproducibility

SPECIFICATIONS

Flow Rate Output Control Potentiometer
Reproducibility $\pm 2\%$
Maximum Working Pressure 25 psi (1.7 bar), 100 psi (6.9 bar)
Maximum Operating Temperature 104°F (40°C)
Maximum Suction Lift 25 ft (7.6 m) vertical lift, based on water
Motor Type Brushless DC motor
Shaft rpm (average maximum) 45
Duty Cycle Continuous
Maximum Viscosity 1500 Centipoise
Motor Voltage (Amp Draw)
 120V 60Hz 1PH (0.6), 230V 60Hz 1PH (0.3), 230V 50Hz 1PH (0.3)
Power Cord Type
 120V 60Hz SJTOWA, 230V 60Hz SJTOWA, 230V 50Hz H05RN-F
Power Cord Plug End
 120V 60Hz 5-15P, 230V 60Hz 6-15P, 230V 50Hz CEE7/7
Power Cord Length 6 ft (1.8 m)
Classification Indoor/Outdoor

S VARIABLE SERIES SPECIFICATIONS



MATERIALS OF CONSTRUCTION

All Housings Polycarbonate

Pump Tube (S3V) Santoprene® (FDA approved), or Versilon®
(S4V, S5V) Santoprene® (FDA approved)

Check Valve Duckbill (S3V) Santoprene® (FDA approved), or Pellethane®

Ball Check Valve Components (S4V, S5V)

- Ceramic ball (FDA approved); Tantalum spring; FKM seat & O-ring **OR**
- Ceramic ball (FDA approved); Stainless steel spring; EPDM seat; Santoprene® O-ring

Pump Head Rollers (S3V, S4V) Polyethylene **(S3V, S4V)** Polycarbonate

Pump Head Guide Rollers (S4V, S5V) Polyethylene

Roller Bushings (S3V, S4V) Oil impregnated bronze

Roller Ball Bearings (S5V) Stainless steel

Suction/Discharge Tubing, Ferrules Polyethylene (FDA approved)

Tube Fittings, Injection Fittings PVC or Polypropylene (both NSF listed)

Connecting Nuts PVC or Polypropylene (both NSF listed)

3/8" Adapter (S3V) PVC or Polypropylene (both NSF listed)

Suction Line Strainer and Cap PVC or Polypropylene (both NSF listed); ceramic weight

All Fasteners Stainless steel

Pump Head Latches (S3V) Polypropylene

Pump Head Thumbscrews (S4V, S5V) Stainless steel; PVC

Pump Head Support and Transition Sleeve (S4V, S5V) Santoprene®

Tube Pull (S4V, S5V) PVC

Leak Detect Components (S3V, S4V) Hastelloy® **(S3V, S4V)** Hastelloy® ; Stainless steel

NOTE: Refer to the chemical guide for material compatibility.

Santoprene® is a registered trademark of Celanese International Corporation.

Versilon® is a registered trademark of Saint-Gobain Performance Plastics.

Pellethane® is a registered trademark of Lubrizol Advanced Materials, Inc.

Hastelloy® is a registered trademark of Haynes International, Inc. .

ACCESSORIES

S3V MODELS

- 3 Connecting Nuts 1/4" or 3/8"
- 3 Ferrules 1/4" or 6 mm Europe
- 1 Injection fitting 25 psi (1.7 bar) max.
or Duckbill check valve 100 psi (6.9 bar) max.
- 1 Weighted suction line strainer
1/4", 3/8" or 6 mm Europe
- 1 20' Roll of suction/discharge tubing
1/4" or 3/8", white, UV black or 6 mm white Europe
- 1 Additional pump tube
- 2 Additional latches
- 1 Mounting bracket
- 1 Manual

S4V, S5V MODELS

- 3 Connecting nuts 3/8"
- 1 Ball check valve
- 1 Weighted suction line strainer 3/8"
- 1 20' Roll of suction/discharge tubing
3/8", white or UV black
- 1 Additional pump tube
- 1 Mounting bracket
- 1 Manual

FLOW RATE OUTPUTS

25 psi (1.7 bar) maximum

Pump Prefix	Pump Tube	Turndown Ratio	Gallons per Day	Gallons per Hour	Ounces per Hour	Ounces per Minute	Liters per Day	Liters per Hour	Milliliters per Hour	Milliliters per Minute
S3V03	3	20:1	2.0-40.0	0.08-1.67	10.7-213.0	0.18-3.56	7.6-151.0	0.32-6.31	315.5-6309.0	5.3-105.0
S3V04	4	20:1	3.0-60.0	0.13-2.50	16.0-320.0	0.27-5.33	11.4-227.0	0.47-9.46	473.2-9464.0	7.9-158.0
S3V05	5	20:1	4.3-85.0	0.18-3.54	22.7-453.0	0.38-7.56	16.1-322.0	0.67-13.41	670.3-13407.0	11.2-223.0
S4V5X	5X	20:1	7.5-150.0	0.31-6.25	40.0-800.0	0.67-13.33	28.4-568.0	1.18-23.66	1182.9-23659.0	19.7-394.0
S5V5G	5G	20:1	15.8-315.0	0.66-13.13	84.0-1680	1.40-28.00	59.6-1192.0	2.48-49.68	2484.2-49684.0	41.4-828.0

Approximate outputs @ 50/60Hz

100 psi (6.9 bar) maximum

Pump Prefix	Pump Tube	Turndown Ratio	Gallons per Day	Gallons per Hour	Ounces per Hour	Ounces per Minute	Liters per Day	Liters per Hour	Milliliters per Hour	Milliliters per Minute
S3V01	1	20:1	0.3-5.0	0.01-0.21	1.3-27.0	0.02-0.44	1.0-19.0	0.04-0.79	39.4-789.0	0.7-13.0
S3V02	2	20:1	0.8-17.0	0.03-0.71	4.5-91.0	0.07-1.51	3.2-64.0	0.13-2.68	134.1-2681.0	2.2-45.0
S3V07	7	20:1	2.0-40.0	0.08-1.67	10.7-213.0	0.18-3.56	7.6-151.0	0.32-6.31	315.5-6309.0	5.3-105.0
S4V7X	7X	20:1	3.0-60.0	0.13-2.50	16.0-320.0	0.27-5.33	11.4-227.0	0.47-9.46	473.2- 9464.0	7.9-158.0
S5V7G	7G	20:1	6.3-125.0	0.26-5.21	33.4-667.0	0.56-11.11	23.7-473.0	0.99-19.72	985.8-19716.0	16.5-329.5

Approximate outputs @ 50/60Hz



NOTICE: The information within this chart is solely intended for use as a guide. The output data is an approximation based on pumping water under a controlled testing environment. Many variables can affect the output of the pump. Stenner Pump Company recommends that all metering pumps undergo field calibration by means of analytical testing to confirm their outputs. The information contained in this flyer is not intended for specific application purposes. Stenner Pump Company reserves the right to make changes to prices, products, and specifications at any time without prior notice.